

SHE STOOPS TO CONQUER

17 JUNE – 03 JULY
Guildford Castle Gardens

As they celebrate their 15th birthday, Guildford Shakespeare Company kick-off their return to the stage with the irresistible comedy **SHE STOOPS TO CONQUER**, in the gardens of Guildford Castle.

Oliver Goldsmith's magnificent Georgian play is one of the best-loved and most-performed of English comedies. This outdoor production transports the play to the 1930s country house world of *Jeeves and Wooster*, replete with fearsome aunts, hapless young men, determined debutantes and hilarious misunderstandings.

The play takes place over the course of a single night, when Marlow, a debonair man-about-town, is led to believe that his future bride's rural family home (the Hardcastles, whom he has never met), is in fact a country inn. When confronted with the elegant Kate Hardcastle, Marlow's swagger melts away, and so to conquer his heart and keep up the pretence, the tenacious Kate poses as a barmaid.

Director **TOM LITTLER**: "*A year later than planned, I'm over the moon to return to Guildford Shakespeare Company with **She Stoops to Conquer**. Oliver Goldsmith's evergreen comedy combines romance, farce, satire and wit. It's a perfectly constructed play with memorable, larger-than-life characters. We're relocating the action from the 18th century to the between-the-wars world of PG Wodehouse, so you can expect a jazzy night out under the stars.*"

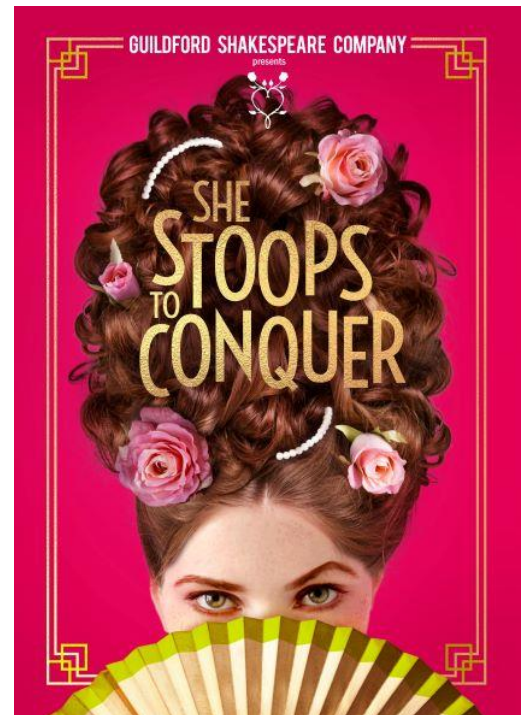
Tom Littler is the Artistic Director of Jermyn Street Theatre, London, and returns to Guildford following his 2019 production of *All's Well That Ends Well* ('*A beautiful, magical production. 5 stars doesn't do it justice.*' – London Theatre 1), which was GSC's first London transfer, and was nominated for five Off-West Awards.

It will have been 15 months since GSC's last full-scale show (*Macbeth*, Feb 2020), and 21 months since their last open-air season. This will also be the theatre company's 45th production, and returns to the venue where it began in 2006.

MATT PINCHES (GSC Co-Founder and Producer): "*GSC is a family, albeit a very large one! Every artist and audience member are part of our extended family, and like so many of us over the last year, we have missed our family very much. This moment has been a long-time coming, and we are taking every precaution to ensure our audiences, artists and staff are able to return safely with confidence to share once again the thrill and magic of live theatre in the open-air.*"

In August last year GSC piloted Guildford's only outdoor event in association with Guildford Borough Council, bringing over 800 people to the town's Castle Gardens. During the last 12 months GSC have continued to stage original shows online, producing 9 live productions, seen by over 4000 households worldwide. Together with their ongoing education and outreach work, the theatre company created 145 jobs for freelance artists, and winning a number of local awards for their commitment to the community.

In July, the same cast will move to Guildford's now wooded former chalk quarry for Shakespeare's **AS YOU LIKE IT**.





Press Release

Date: **21 APRIL 2021** Use: **IMMEDIATE**
GSC Honorary Patron **Brian Blessed OBE**

ACTING COMPANY

To be announced

ARTISTIC TEAM

TOM LITTLER, director
NEIL IRISH, designer
MATT EATON, sound designer
ANETT BLACK, associate designer
INDIANA LOWN-COLLINS, assistant director

TICKETS

General booking 30 April | Priority Booking 26 April

Full **£26.50**
Concessions **£23.50**
(over 65, students, Equity, Jobseekers, Reg Disabled)
Children **£16.50** (under 16)

Family tickets **£78** (2 children, 2 full)
Schools **£15** pupils (1 teacher free for every 10)

Preview 17 June £18.50 (£16.50 children)

DATES

She Stoops to Conquer **17 June – 03 July**
Audio Description 02 July, 7.30pm

PRESS NIGHT 21 JUNE, 7.30pm

BOOKING & FURTHER DETAILS

www.guildford-shakespeare-company.co.uk

PRESS

Matt Pinches matt@guildford-shakespeare-company.co.uk
07971 234141

ENDS 2 OF 2

Note to Editors

Guildford Shakespeare Company is an award-winning, site-responsive theatre company. Established in 2006 by actor-managers Sarah Gobran and Matt Pinches, it has produced over 40 shows in unique venues including Guildford Cathedral, Watts Gallery, West Horsley Place and a Flemish Spiegeltent. In 2015, Brian Blessed OBE played the title role in *King Lear*. Its Education and Outreach works with over 5000 people young and old every year including free-to-access social inclusion programmes. GSC is one of the largest producers of home-grown theatre in the region.